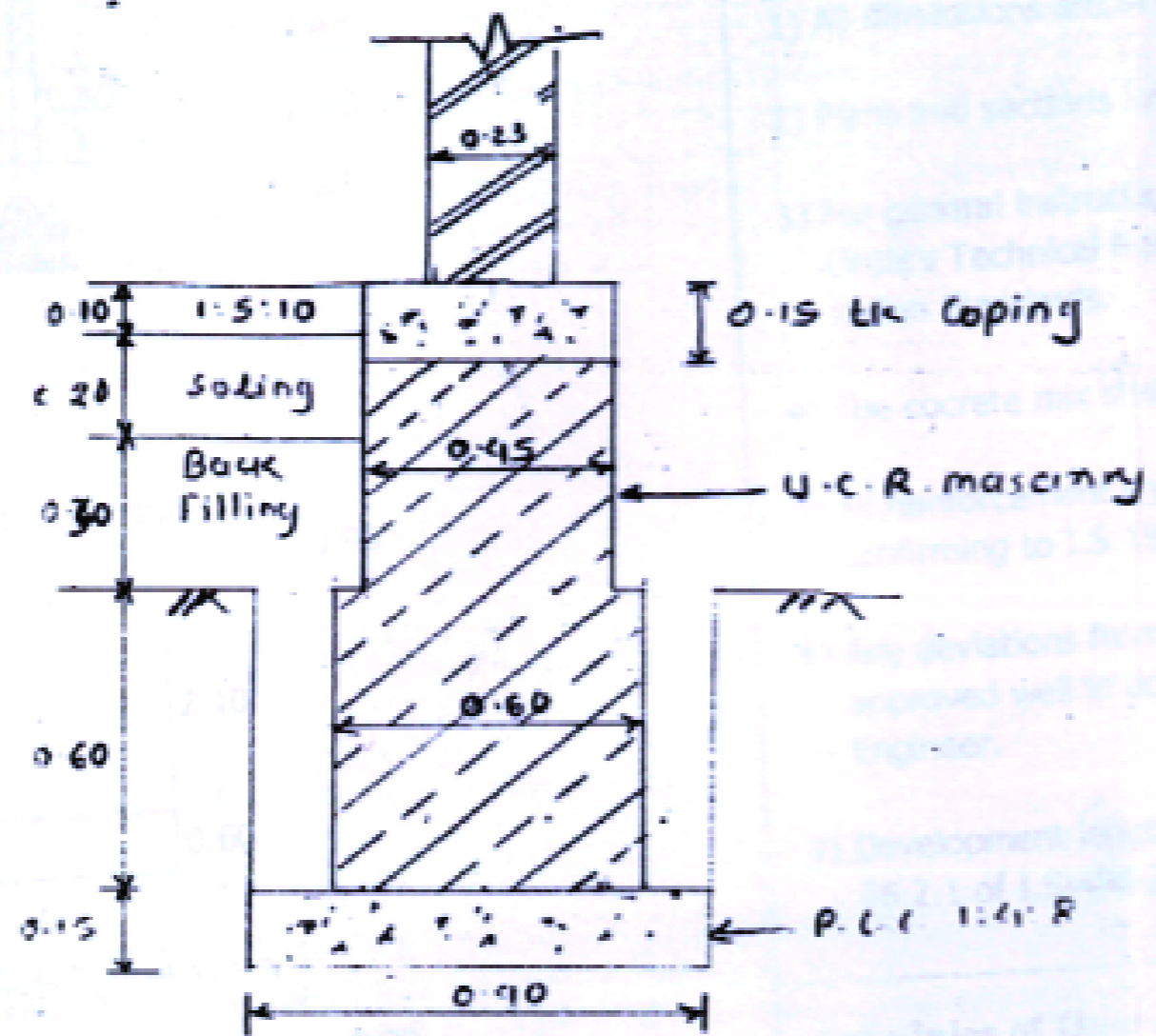


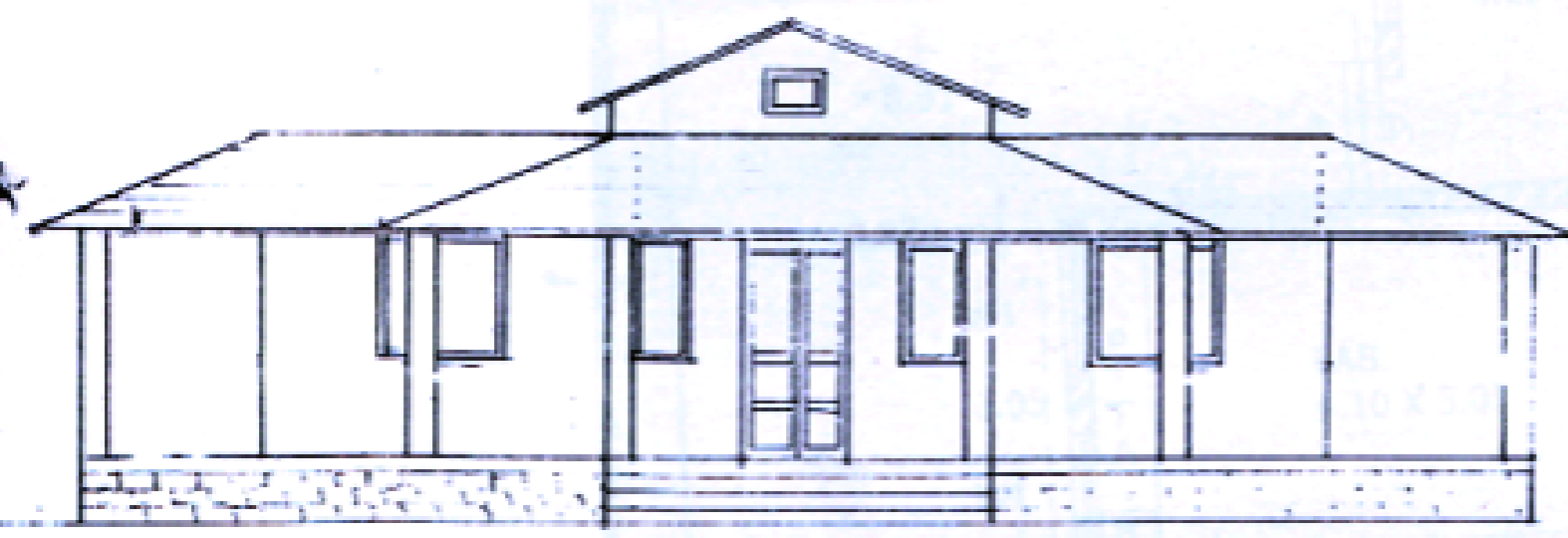
PLAN



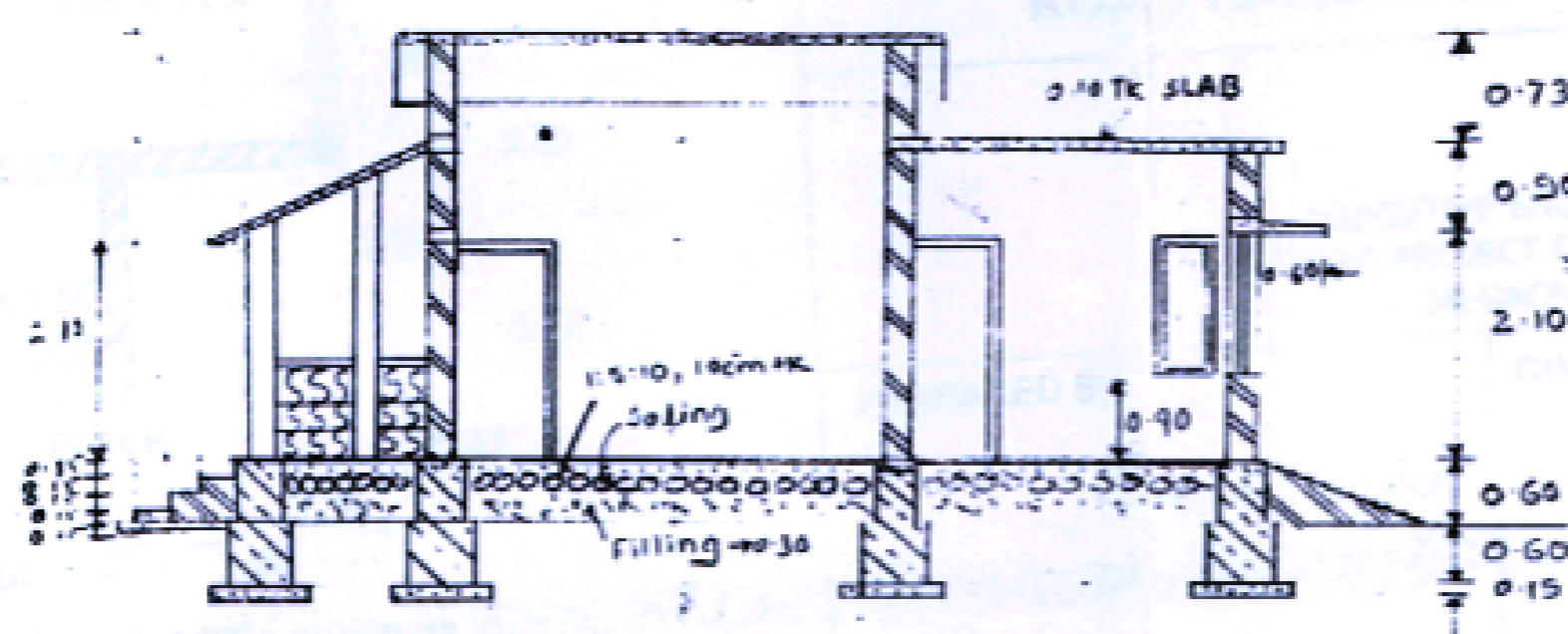
DETAILS OF FOUNDATION

DOORS	
D	= 1.20 x 2.10 (C.H.)
D <sub>1</sub>	= 1.20 x 2.10
D <sub>2</sub>	= 0.90 x 2.10
D <sub>3</sub>	= 0.80 x 2.10
WINDOWS	
W <sub>1</sub>	= 1.20 x 1.20
W <sub>2</sub>	= 0.60 x 1.20
W <sub>3</sub>	= 0.60 x 0.40
V	= 0.40 x 1.20

$1 \times 9.92 \times 7.69 = 76.28$   
 $2 \times 3.23 \times 1.00 = (-) 6.46$   
 $2 \times 2.23 \times 1.00 = (-) 4.46$   
**Total: 65.32594**



ELEVATION



SECTION 'A-A'

0.73  
 0.50 ROAD FROM JALGAON  
 2.10  
 0.60  
 0.60  
 0.15

Executive Engineer  
 Road Project Division  
 Jalgaon

DETAIL DRAWING OF PROPOSED  
 P.W.D. SERVICE CENTRE FOR  
 GOVT. ENGINEERING COLLEGE  
 CAMPUS AT JALGAON.